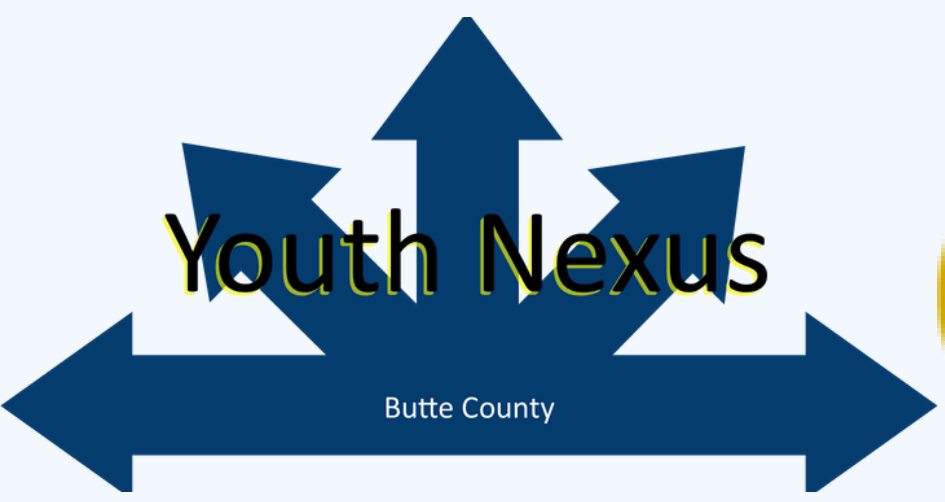


HEALTHY RURAL CALIFORNIA, INC.



YOUTH AND FAMILIES

LOCAL SERVICES GUIDE



DRUG-FREE COMMUNITIES CHICO COMMUNITY PREVENTION COALITION SECTOR REPRESENTATIVES

HEALTHCARE PROFESSIONAL SECTOR REPRESENTATIVE	ENLOE HEALTH WEBSITE: WWW.ENLOE.ORG
YOUTH SERVING ORGANIZATION SECTOR REPRESENTATIVE	BOYS & GIRLS CLUB WEBSITE: WWW.BGCNV.ORG
LAW ENFORCEMENT SECTOR REPRESENTATIVE	CHICO POLICE DEPARTMENT WEBSITE: HTTPS://CHICO.CA.US
SCHOOLS SECTOR REPRESENTATIVE	BIDWELL JR. HIGH SCHOOL WEBSITE: HTTP://BJHS.CHICOUSD.ORG
SUBSTANCE ABUSE ORGANIZATION SECTOR REPRESENTATIVE	AEGIS TREATMENT CENTER WEBSITE: HTTPS://PINNACLETREATMENT.COM
BUSINESS SECTOR REPRESENTATIVE	PLUMAS BANK WEBSITE: HTTPS://WWW.PLUMASBANK.COM
CIVIC & VOLUNTEER ORGANIZATION SECTOR REPRESENTATIVE	YOUTH NEXUS WEBSITE: HTTPS://BUTTEYOUTHNOW.ORG/YOUTH-NEXUS
STATE, LOCAL, AND TRIBAL GOVERNMENT SECTOR REPRESENTATIVE	BUTTE COUNTY DEPARTMENT OF BEHAVIORAL HEALTH WEBSITE: HTTPS://WWW.BUTTECOUNTY.NET
FAITH BASED SECTOR REPRESENTATIVE	THE SALVATION ARMY OF CHICO HTTPS://WWW.SALVATIONARMYUSA.ORG/USN/
PARENT & YOUTH SECTOR	PARENT- ANGELA M. YOUTH:

Social Connections

Having positive relationships that offer emotional, informational, instrumental and spiritual support.



Concrete Supports in Times of Need

Having access to tangible goods and services to help address family's needs and minimize stress.



Protective Factors

Build Family Strengths and Promote Optimal Child Development

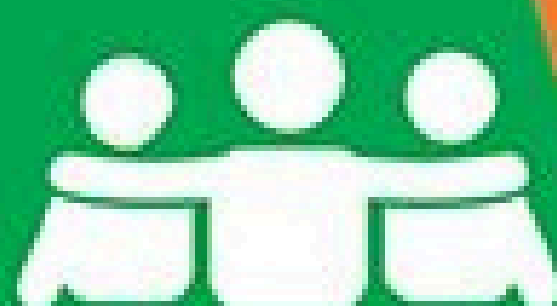
Knowledge of Parenting and Child Development

Understanding child development and parenting strategies that support physical, cognitive language, social and emotional development.



Children's Social & Emotional Competence

Having family and child interactions that help children develop the ability to communicate clearly, recognize and regulate emotions and establish relationships.



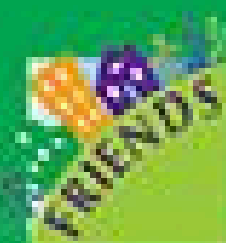
Parental Resilience

Managing stress and functioning well even when you are faced with challenges, trouble or trauma.



Nurturing & Attachment

The emotional tie along with a pattern of positive interactions between the parent and child that develops over time.



CHICO RESOURCES
NURTURING & ATTACHMENT



FARMERS MARKETS

<p>Chico Certified Farmers Markets PO Box 455, Chico, CA 95927</p>	<p>(530) 893-FARM (530) 893-3276 chicofarmersmarket.com</p>
<p>Wednesday Market North Valley Plaza Mall</p>	<p>Parking Lot: Pillsbury Road adjacent to Trader Joe's Year-Round. 7:30AM – 12:00PM</p>
<p>Thursday Night Market Downtown Chico</p>	<p>Broadway between 2nd and 5th Streets April to last week of September 6:00 PM - 9:00 PM</p>
<p>Saturday Market Downtown Chico</p>	<p>Municipal Parking Lot: 2 nd Street & Wall Street Year Round. 7:30 AM – 1:00 PM</p>

CHICO RESOURCES CONCRETE SUPPORTS IN TIMES OF NEED



HOUSING

Keep Your Home California	Keepyourhomecalifornia.org (888) 954-5337 (888) 954 - KEEP
Community Action Agency of Butte County	Community Action Agency 181 East Shasta Avenue, Chico, CA 95973 (530) 712-2600
Community Housing Improvement Program	Community Housing Improvement Program 1001 Willow Street, Chico, CA 95928 (530) 891-6931
Habitat for Humanity of Butte County	Habitat for Humanity 220 Meyers Street, Chico, CA 95928 (530) 895-1271
Housing Authority of the County of Butte	Housing Authority 2039 Forest Avenue, Chico, CA 95928 (530) 895-4474
City of Chico City Housing and Neighborhood Services	Housing and Neighborhood Services 411 Main Street, 2nd Floor, Chico, CA 95928

CHICO RESOURCES CONCRETE SUPPORTS IN TIMES OF NEED



FAMILY RESOURCES

Butte Community College	<ul style="list-style-type: none"> • Chico Center (530) 895-1352 • 2320 Forest Avenue, Chico, CA 95928
Boys and Girls Club	<ul style="list-style-type: none"> • Chico Clubhouse & Teen Center • 601 Wall Street, Chico, CA 95928 • (530) 899-0335
Butte County Department of Employment and Social Services (DESS)	<ul style="list-style-type: none"> • 2445 Carmichael Drive, Chico, CA 95928 • DESS Chico (530) 895-4364 • Adult Services (530) 538-7538 • Reporting Line (800) 664-9774 • In-Home Supportive Services (855) 398-8899 • Public Guardian (530) 538-7251
Butte County Library	<p>Chico Library (530) 891-2726 1108 Sherman Avenue, Chico, CA 95926</p>
CalFresh	<p>CalFresh (877) 410-8803 http://www.c4yourself.com/ 2445 Carmichael Drive, Chico, CA 95928</p>
CalWORKs	<p>CalWORKs (877) 410-8803 http://www.c4yourself.com/ 2445 Carmichael Drive, Chico, CA 95928</p>
California Low-Cost Auto Insurance	<p>Low Cost Auto Insurance (866) 602-8861 www.mylowcostauto.com</p>
California State University, Chico	<p>CSUC (530) 898-4636 400 West 1st Street, Chico, CA 95929</p>



FAMILY RESOURCES

Caring Choices	Caring Choices (530) 899-3873 1398 Ridgewood Drive, Chico, CA 95973
Center for Healthy Communities	Center for Healthy Communities (530) 898-5323 25 Main Street, Suites 101 & 201, Chico, CA 95929
Chico Area Recreation and Park District	CARD (530) 895-4711 545 Vallombrosa Avenue, Chico, CA 95926
Computers for Classrooms, Inc.	Computers for Classrooms (530) 895-4175 411 Otterson Drive, Suite 100, Chico, CA 95928
Facebook for Sale Groups	Chico Needs: https://www.facebook.com/groups/ChicoNeeds/ Butte County's Virtual Yard Sale: https://www.facebook.com/groups/105386366278218/
Four Winds Indian Education Center	Four Winds (530) 895-4212 2345 Fair Street, Chico, CA 95928
Freecycle Network	https://groups.freecycle.org/group/ChicoCA/
National Parent Helpline	Helpline (855) 427-2736 www.nationalparenthelpline.org (855) 4 A PARENT
Valley Oak Children's Services	Valley Oak (530) 895-3572 3120 Cohasset Road, Suite 6, Chico, CA 95973

CHICO RESOURCES CONCRETE SUPPORTS IN TIMES OF NEED



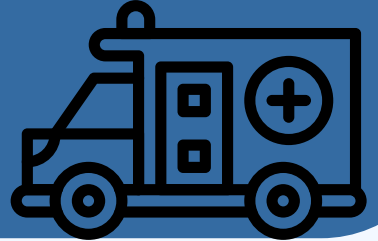
DISABILITY SERVICES

Ability First Sports Camp	Ability First (530) 588-0335 http://www.facebook.com/abilityfirstsports
ARC of Butte County	Chico (530) 891-5865 2030 Park Avenue, Chico, CA 95928
Autism Lifespan	Autism Lifespan (530) 897-0300 2418 Cohasset Road, Suite #150, Chico, CA 95926
Brain Injury Coalition	(530) 342-3111 441 Main Street, Suite 210, Chico, CA 95928
Caminar	Caminar (530) 343-4421 376 Rio Lindo Avenue, Chico, CA 95926
CSU, Chico Accessibility Resources Center	Accessibility Resource Center (530) 898-5959 400 West 1 st Street, Chico, CA 95929
CSU, Chico Autism Clinic	(530) 898-6373 400 West 1 st Street, Chico, CA 95929 Yolo Hall Room 243
CSU, Chico Center for Communication Disorders	(530) 898-5871 400 West 1st Street, Chico, CA 95929
Deaf and Disabled Telecommunications Program	Telecommunications Program (800) 806-1191 http://ddtp.cpuc.ca.gov/
Disability Action Center	Disability Action Center (530) 893-8527 1161 East Avenue, Chico, CA 95926
Disability Rights California	Disability Rights (800) 776-5746 1280 East 9th Street, Unit E, Chico, CA 95928 (530) 345-4113
Do it Leisure	(530) 343-6055 2233 Fair Street, Chico, CA 95928

**DISABILITY SERVICES**

Hartford Place	(530) 345-2029 2058 Hartford Drive, Chico, CA 95928
Far Northern Regional Center	Far Northern (530) 895-8633 1377 East Lassen Avenue, Chico, CA 95973
Home Healthcare Management	Home Health (530) 343-0727 1398 Ridgewood Drive, Chico, CA 95973
Meals on Wheels	(530) 343-9147 2836 Morseman Avenue, Chico, CA 95973
Office of Client's Rights Advocacy	Client's Rights Advocacy (530) 345-4113 1280 East 9th Street, Unit E, Chico, CA 95928
Passages Caregiver Resources Center	Passages (530) 898-5925 25 Main Street, Suite 202, Chico, CA 95929
State Department of Rehabilitation	Chico (530) 895-5507 470 Rio Lindo Avenue, Suite 4, Chico, CA 95926
State Council on Developmental Disabilities	Office (530) 895-4027 1367 E. Lassen Avenue #B3, Chico, CA 95973
Wings of Eagles	Office (530) 893-9231 1380 Filbert Avenue, Chico, CA 95926
Work Training Center	WTC (530) 343-7994 2255 Fair Street, Chico, CA 9592

CHICO RESOURCES CONCRETE SUPPORTS IN TIMES OF NEED



EMERGENCY SERVICES

Dial 9-1-1 to report an emergency

**Chico 24-hour Dispatch Center
(530) 895-4911**

Butte County Adult Protective Services

6th Street Center for Youth

Catholic Ladies Relief Society

Children's Services Division

Jesus Center

Salvation Army

Torres Community Shelter

**Non-emergency phone number
(530) 897-4900**

Dial 9-8-8 Mental Health Emergency

Adult Protective Services (800) 664-977

**Youth Center (530) 894-8008
130 West 6 th Street, Chico, CA 95928**

**Office (530) 895-8331
1386 Longfellow Avenue, Chico, CA 95926**

**24-hour Abuse Hotline 1-800-400-0902
North County Office (530) 879-3731
2445 Carmichael Drive, Chico, CA 95928**

**Jesus Center (530) 345-2640
1297 Park Avenue, Chico, CA 95928**

**Toll Free (800) 728-7825
Chico (530) 342-1871
567 E. 16th St Chico, 95928**

**Torres Shelter (530) 891-9048
101 Silver Dollar Way, Chico, CA 95928**



HEALTH & WELLNESS

Addus Home Health Services	Addus (530) 342-7248 936 Mangrove Avenue, Chico, CA 95926
Ampla Health	<ul style="list-style-type: none"> • Chico (530) 342-4395 680 Cohasset Road, Chico, CA 95926 • Chico Dental (530) 342-6065 236 West East Avenue, Suite H, Chico, CA 95926
Butte County Public Health	Chico Clinic (530) 879-3665 695 Oleander Avenue, Chico, CA 95926
Butte Home Health and Hospice	Butte Home Health and Hospice (530) 895-0462 10 Constitution Drive, Chico, CA 95973
Enloe Medical Center	Hospital (530) 332-7300 1531 Esplanade, Chico, CA 95926
Enloe Prompt Care	<ul style="list-style-type: none"> • California Park (530) 332-6850 • 888 Lakeside Village Commons, Chico, CA 95926 Cohasset (530) 332-4111 60 Cohasset Road, Chico, CA 95926
Medi-Cal	Chico (530) 895-4364 2445 Carmichael Drive, Chico, CA 95928



HEALTH & WELLNESS

<p>Northern Valley Indian Health</p>	<ul style="list-style-type: none"> • NVIH (530) 896-9400 845 • W. East Avenue, Chico, CA 95926 <p>Chico Cohasset Dental and Women’s Health (530) 433-260-1277 Cohasset Road, Chico, CA 95926 Children’s Health Center (530) 781-1440 500 Cohasset Road, Suite 15, Chico, CA 95926</p>
<p>Peg Taylor Center</p>	<p>Peg Taylor Center (530) 342-2345 124 Parmac Road, Chico, CA 95926</p>
<p>Planned Parenthood</p>	<p>Planned Parenthood (530) 342-8367 3100 Cohasset Road, Chico, CA 95973 (800) 230-7526</p>
<p>Project S.A.V.E. Chico</p>	<p>S.A.V.E. (530) 680-5974 2553 Hwy 32, Chico, CA 95973</p>
<p>Shalom Free Clinic</p>	<p>Shalom Free Clinic (530) 342-2445 1010 Mangrove Avenue, Suite D, Chico, CA 95926</p>
<p>Social Security Administration</p>	<p>Chico (866) 964-7585 1370 E Lassen Avenue #150, Chico, CA 95926</p>
<p>Women’s Health Specialists</p>	<p>Women’s Health Specialists (530) 891-1911 1469 Humboldt Road #200, Chico, CA 95928</p>
<p>Women’s Resource Clinic</p>	<p>Clinic & 24-hour Hotline (530) 897-6100 115 West 2nd Avenue, Chico, CA 95926 Mobile Medical Clinic 1492 East Avenue, across from PV High School Tuesday: 11:00 AM – 4:00 PM</p>

**TRANSITION RESOURCES**

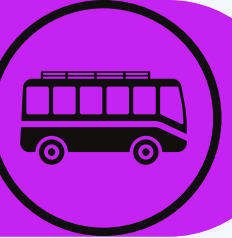
Disability Benefits 101	https://ca.db101.org/
Genetically Handicapped Persons Program (GHPP)	GHPP (916) 327-0470 Toll Free (800) 639) 0597 MS8100, PO Box 997413, Sacramento, CA 95899-7413 www.dhcs.ca.gov/services/ghpp/Pages/default.aspx
Got Transition	http://www.gottransition.org/
Independent Living Services of Northern California	Disability Action Center (530) 893-8527 1161 East Avenue, Chico, CA 95926
Office of Disability Employment Policy (ODEP)	http://www.dol.gov/odep/
When You're 18 You Are in Charge of Your Health	http://www.acphd.org/media/121171/transition_health_care.pdf

CHICO RESOURCES SOCIAL & EMOTIONAL COMPETENCE



LEGAL SERVICES

<p>Butte County Self Help and Referral Program (SHARP)</p>	<p>Chico (530) 532-7024 1775 Concord Avenue, Chico, CA 95928</p>
<p>Legal Services of Northern California</p>	<p>(530) 345-9491 541 Normal Street, Chico, CA 95928</p>
<p>Community Legal Information Center</p>	<p>Community Legal Information Center (530) 898-4354 25 Main Street, Suite 102, Chico, CA 95929</p>
<p>Northern California Immigrant Resource Center</p>	<p>Immigrant Resource Center (530) 715-2300 30 Independence Circle, Chico, CA 95973</p>
<p>Superior Court of California, County of Butte County</p>	<p>http://www.buttecourt.ca.gov/</p>
<p>Butte County Courthouse One Court Street, Oroville, CA 95965</p>	<ul style="list-style-type: none"> • Court House (530) 532-7002 • Appeals (530) 532-7023 • Court Administration (530) 532-7013 • Court Compliance (530) 532-7014 • Criminal (530) 532-7011 • Jury (530) 532-7001 • Juvenile Delinquency (530) 532-7023 • Mediation (530) 532-7003 • Traffic (530) 532-7005
<p>North Butte County Courthouse</p>	<ul style="list-style-type: none"> - 1775 Concord Avenue, Chico, CA 95928 (530) 532-7002 - Civil Division (530) 532-7009 - Court Compliance (530) 532-7014 - Family Law (530) 532-7008 - Juvenile Dependency (530) 532-7010 - Probate Division (530) 532-7017 - Traffic Division (530) 532-7005



TRANSPORTATION SERVICES

American Cancer Society	Toll Free (800) 227-2345 www.cancer.org
American Kidney Fund	Toll Free (800) 638-8299 www.kidneyfund.org
Angel Flight West	Toll Free (888) 4-AN-ANGEL www.angelflightwest.org (888) 426-2643
Butte Regional Transit	Toll Free (800) 822-8145 B-Line (530) 342-0221 326 Huss Drive, Suite 150, Chico, CA 95928 www.blinetransit.com
Catholic Ladies Association	Catholic Ladies Association (530) 895-8331 1386 Longfellow Avenue, Chico, CA 95926
Medi-Cal Managed Care	Anthem Blue Cross (877) 931-4755 California Health and Wellness (866) 842-0631

CHICO RESOURCES
SOCIAL CONNECTIONS



TRANSPORTATION SERVICES

Merit Medi-Trans	Toll Free (866) 890-8690 Chico (530) 893-8620 East Eaton Road, Suite A, Chico, CA 95973
Shriners Hospital for Children	Bill Richards (530) 872-1343 Claudia (916) 453-2095
Wings of Eagles – The Joseph Alvarez Organization	Chico (530) 893-9231 P.O. Box 4031, Chico, CA 95927
Work Training Center	WTC (530) 343-7994 2255 Fair Street, Chico, CA 95928

CHICO RESOURCES
RESILIENCE



COUNSELING & MENTAL HEALTH SERVICES

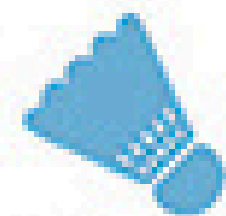
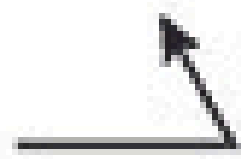
<p>Butte County Department of Behavioral Health</p>	<ul style="list-style-type: none"> • Crisis Intervention Toll Free Line (800) 334-6622 • Local Crisis Intervention Line: (530) 891-2810 • Chico Community Counseling Center: (530) 891-2945 109 Parmac Avenue, Chico, CA 95926 • Chico Adult Outpatient Center: (530) 891-2784 560 Cohasset Avenue, Chico, CA 95926 • Adult Inpatient Psychiatric Health Facility: (530) 891-2775 592 Rio Lindo Avenue, Chico, CA 95926 <ul style="list-style-type: none"> - Psychiatric Health Facility for individuals on 72-hour hold • Iversen Wellness and Recovery Center: (530) 879-3311 492 Rio Lindo Avenue, Chico, CA 95926
<p>California State University, Chico Counseling Training Center</p>	<p>CSUC Counseling Training Center (530) 898-4195</p>
<p>Catalyst Domestic Violence Services</p>	<p>24 Hour Hotline (800) 895-8476 Chico Business Office (530) 343-7111 330 Wall Street, Suite 50, Chico, CA 95928</p>
<p>The Growing Place</p>	<p>The Growing Place (530) 588-0448 1074 East Avenue, Suite A-4, Chico, CA 95926</p>
<p>Northern Valley Catholic Social Services (NVCSS)</p>	<p>NVCSS Chico (530) 345-1600 10 Independence Circle Chico, CA 95973</p>
<p>Northern Valley Talk Line</p>	<p>Northern Valley Talk Line (855) 582-5554</p>
<p>Rape Crisis Intervention and Prevention</p>	<p>Crisis Line (530) 342-7273 Office (530) 891-1331 2889 Cohasset Road #2, Chico, CA 95973</p>
<p>Shalom Free Clinic</p>	<p>Shalom Free Clinic (530) 342-2445 295 East Washington Avenue, Chico, CA 95928</p>
<p>Stonewall Alliance Center</p>	<p>Stonewall Alliance (530) 893-3336 358 East 6 th Street, Chico, CA 95928</p>

ADOPT PROTECTIVE FACTORS TO FACE CHALLENGES

BEHAVIOURAL CHALLENGES



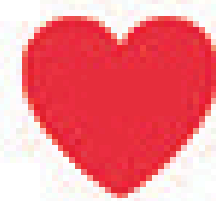
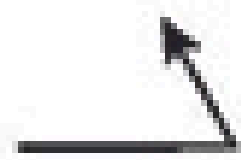
Behavioural
problems



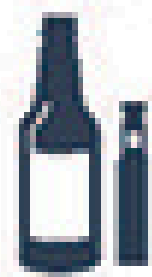
Physical
activity



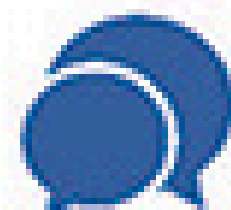
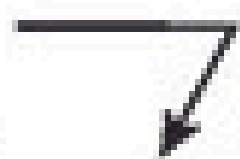
Conflicts with
friends or family



Emotional
support



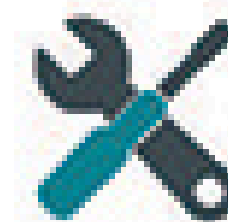
Turning to drugs
and alcohol



Social
activities



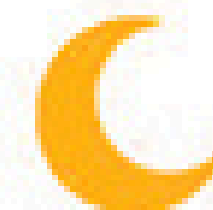
RESILIENCE



Skill
development

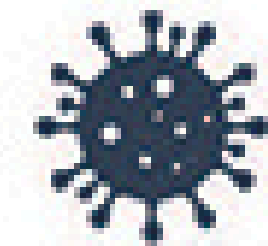


Proper
nutrition

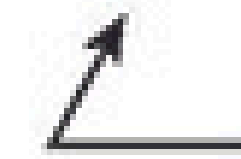


Adequate
sleep

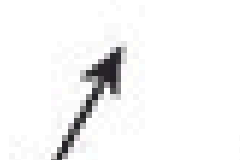
LIFE CHALLENGES



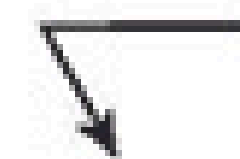
Covid-19:
uncertainty
and adaptation



Stress of
studies



Anxiety and
depression



For protective factors at the family and
community levels, visit nbhc.ca/resilience



New Brunswick
Health Council

Conseil de la santé
du Nouveau-Brunswick

NURTURING & ATTACHMENT



FARMERS MARKETS

Tuesday Market

**Paradise Alliance Church Parking Lot, 6491
Clark Road
May to last week of October. 7:30 AM – 12:00
PM**

Thursday Market

**Clark and Pearson Road, 5720 Clark Road
May to October. 4:00 – 7:00 PM**



CONCRETE SUPPORTS IN TIMES OF NEED

HOUSING

<p>Town of Paradise Housing Program</p>	<p>Housing Program (530) 872-6291 5555 Skyway, Paradise, CA 95969</p>
--	--

FAMILY RESOURCES

<p>Boys and Girls Club</p>	<ul style="list-style-type: none"> • Paradise I (530) 872-1502 588 Pearson Road, Paradise, CA 95969 • Paradise II (530) 872-0562 6593 Pentz Road, Paradise, CA 95969 • Paradise III (530) 877-7132 5657 Recreation Drive, Paradise, CA 95969 • Paradise Teen Center (530) 872-3662 6241 Skyway, Paradise, CA 95969 • Magalia (530) 873-2437 13878 Compton Drive, Magalia, CA 95954
<p>Butte County Library</p>	<p>Paradise Library (530) 872-6320 5922 Clark Road, Paradise, CA 95969</p>
<p>California Low Cost Auto Insurance</p>	<p>Low Cost Auto Insurance (866) 602-8861 www.mylowcostauto.com</p>
<p>Facebook for Sale Groups</p>	<p>Butte County's Virtual Yard Sale: https://www.facebook.com/groups/105386366278218/</p>
<p>National Parent Helpline</p>	<p>Helpline (855) 427-2736 www.nationalparenthelpline.org (855) 4 A PARENT</p>

SOCIAL AND EMOTIONAL COMPETENCE**DISABILITY SERVICES**

ARC of Butte County	Paradise (530) 762-0279 5325 Black Olive Drive, Paradise, CA 95969
Meals on Wheels	Paradise (530) 877-8707 5974 Pentz Road, Paradise, CA 95969
Ability First Sports Camp	Ability First (530) 588-0335 http://www.facebook.com/abilityfirstsports
Deaf and Disabled Telecommunications Program	Telecommunications Program (800) 806-1191 http://ddtp.cpuc.ca.gov/

EMERGENCY SERVICES

Help for People	Help for People (530) 872-4357 5533 Skyway, Suite A, Paradise, CA 95969
Paradise Ridge Family Resource Center	Family Resource Center (530) 872-3896 6249 Skyway, Paradise, CA 95969
Butte County Adult Protective Services	Adult Protective Services (800) 664-9774



HEALTH & WELLNESS

Feather River Health Center

**Health Center (530) 872-2000
5125 Skyway, Paradise, CA 95969**

Feather River Hospital Paradise Hospice

**1295 Bille Rd, Paradise, CA 95969
(530) 877-8755**

Samaritan Free Clinic

**Luther Hall (530) 872-7085
780 Luther Drive, Paradise, CA 95969**

Covered California

Covered CA (800) 300-1506 www.coveredca.com



TRANSITION RESOURCES

Disability Benefits 101

<https://ca.db101.org/>

Got Transition

<http://www.gottransition.org/>

Office of Disability Employment Policy (ODEP) **<http://www.dol.gov/odep/>**

When You're 18 You Are in Charge of Your Health

http://www.acphd.org/media/121171/transition_health_care.pdf

**PARADISE/MAGALIA RESOURCES
SOCIAL CONNECTIONS**



LEGAL SERVICES

**Superior Court of California
County of Butte County**

<http://www.buttecourt.ca.gov/>

TRANSPORTATION SERVICES

American Cancer Society

**Toll Free (800) 227-2345
www.cancer.org**

American Kidney Fund

<http://www.kidneyfund.org/>

Angel Flight West

**Toll Free (888) 4-AN-ANGEL
www.angelflightwest.org
(888) 426-2643**

Feather River Hospital and Hospice

**(530) 877-8755
1289 Billie Road, Paradise, CA 95969**

Medi-Cal Managed Care

**Anthem Blue Cross (877) 931-4755
California Health and Wellness (866) 842-0631**

Merit Medi-Trans

Paradise (530) 872-2222

Shriners Hospital for Children

**Bill Richards (530) 872-1343
Claudia (916) 453-2095**

PARADISE/MAGALIA RESOURCES
RESILIENCE



COUNSELING & MENTAL HEALTH SERVICES

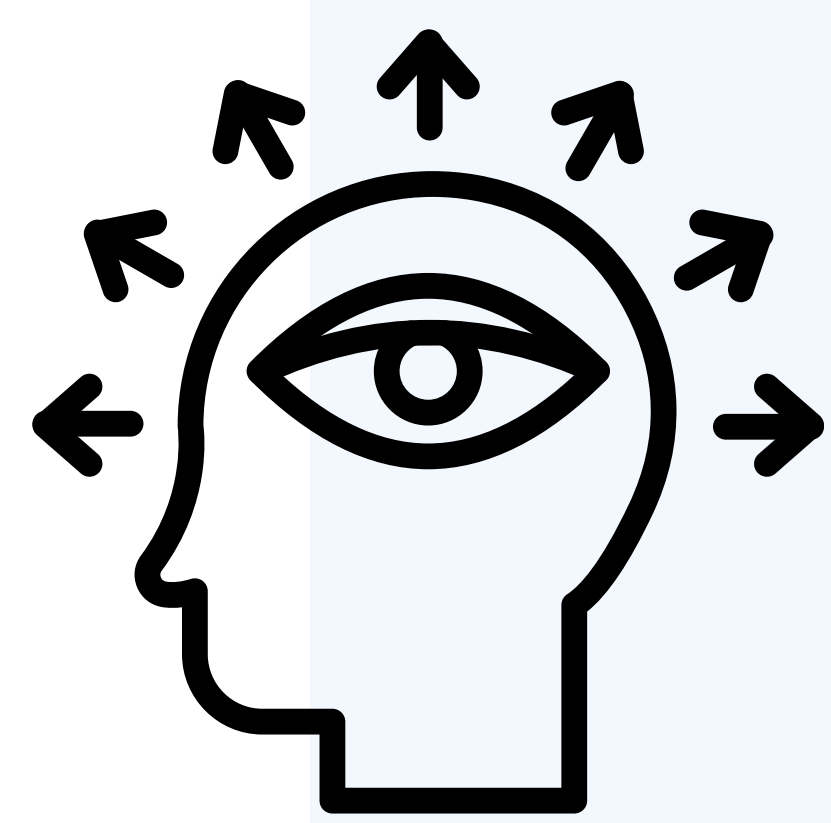
Butte County Department of Behavioral Health	<ul style="list-style-type: none">• Crisis Intervention Toll Free Line 1+(800) 334-6622• Local Crisis Intervention Line: 1+(530) 891-2810
Paradise Adult Services	805 Cedar Street, Suite B, Paradise, 95969 (530) 877-5845
Catalyst Domestic Violence Services	24 Hour Hotline (800) 895-8476
Northern Valley Catholic Social Services (NVCSS)	NVCSS Paradise (530) 876-0928 7078 Skyway, Paradise, CA95969
Northern Valley Talk Line	Talk Line (855) 582-5554
Building Resilience Center	6295 Skyway, Paradise, CA 95969 (530) 872-6291



Social & Emotional Learning

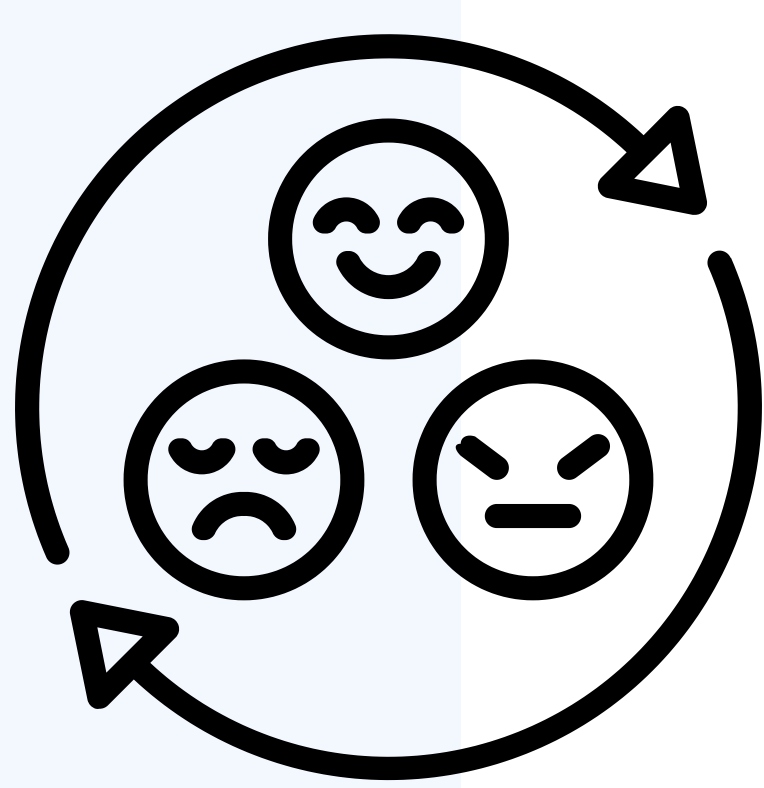
Self-Awareness

Recognizing one's emotions and values as well as one's strengths and challenges



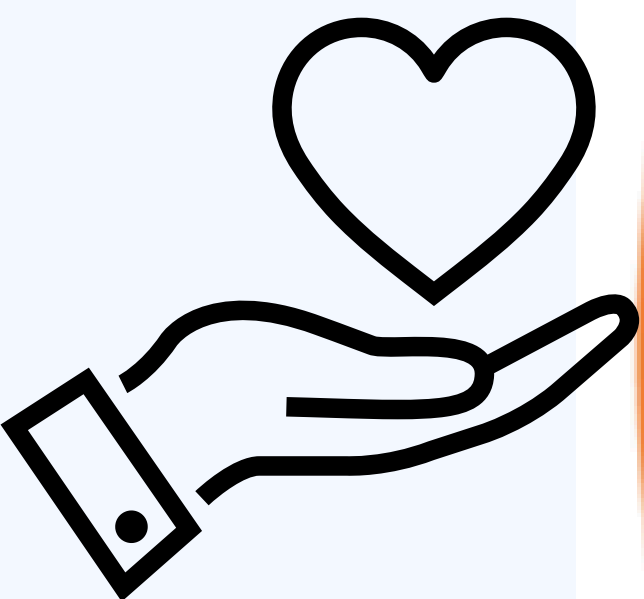
Self-Management

Managing emotions and behaviors to achieve one's goals



Social Awareness

Showing understanding and empathy for others



Relationship Skills

Forming positive relationships, working in teams, dealing effectively with conflict



Responsible Decision-Making

Making ethical, constructive choices about personal and social behavior



**GRIDLEY RESOURCES
NURTURING & ATTACHMENT**



FARMERS MARKETS

Gridley Farmers Market

**Gridley District Office (530) 846-4557
239 Sycamore Street, Gridley, CA 95948**

Tuesday Market

**Daddow Park: between Hazel and Sycamore Streets
May to August 5:00-8:00 PM**

**GRIDLEY RESOURCES
CONCRETE SUPPORTS IN TIMES OF NEED**



HOUSING

Keep Your Home California

**Keep Your Home California (888) 954-5337
keepyourhomecalifornia.org (888) 954-KEEP**





FAMILY RESOURCES

<p>Butte County 211</p>	<p>Butte 211 Dial 211 www.helpcentral.org</p>
<p>National Parent Helpline</p>	<p>Helpline (855) 427-2736 www.nationalparenthelpline.org (855) 4 A PARENT</p>
<p>California Low Cost Auto Insurance</p>	<p>Low Cost Auto Insurance (866) 602-8861 www.mylowcostauto.com</p>
<p>Facebook for Sale Groups</p>	<p>Butte County's Virtual Yard Sale: https://www.facebook.com/groups/105386366278218/</p>
<p>Butte County Department of Employment and Social Services (DESS)</p>	<ul style="list-style-type: none"> • DESS Chico (530) 895-4364 2445 Carmichael Drive, Chico, CA 95928 • Adult Services (530) 538-7538 • Reporting Line (800) 664-9774 • In-Home Supportive Services (855) 398-8899 • Public Guardian (530) 538-7251
<p>Butte County Library</p>	<p>Gridley Library (530) 846-3323 299 Spruce Street, Gridley, CA 95948</p>

GRIDLEY RESOURCES
CONCRETE SUPPORTS IN TIMES OF NEED



DISABILITY SERVICES

Ability First Sports Camp

Ability First (530) 588-0335
<http://www.facebook.com/abilityfirstsports>

Deaf and Disabled Telecommunications Program

Telecommunications Program (800) 806-1191
<http://ddtp.cpuc.ca.gov/>

EMERGENCY SERVICES

Butte County Adult Protective Services

Adult Protective Services (800) 664-9774

Gridley Community Center

Gridley Community Center (530) 538-7534
200 East Spruce Street, Gridley, CA 95948



HEALTH & WELLNESS

Covered California	Covered CA (800) 300-1506 www.coveredca.com
Ampla Health	(530) 846-6231 520 Kentucky Street, Gridley, CA 95948
Orchard Hospital	Hospital (530) 846-9000 240 Spruce Street, Gridley, CA 95948

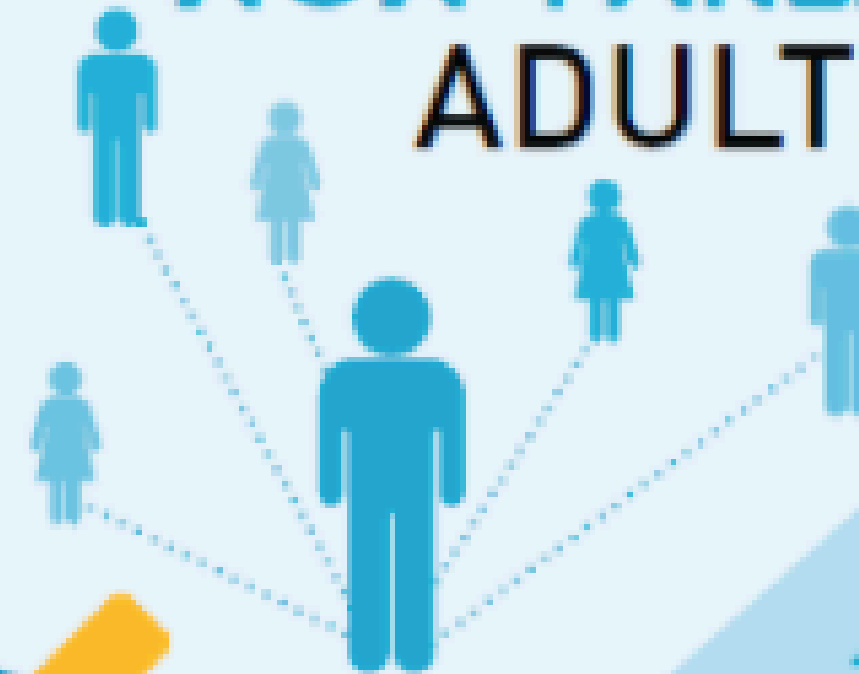
TRANSITION RESOURCES

Disability Benefits 101	https://ca.db101.org/
Genetically Handicapped Persons Program (GHPP)	GHPP (916) 327-0470 Toll Free (800) 639) 0597
Got Transition	http://www.gottransition.org/
Office of Disability Employment Policy (ODEP)	http://www.dol.gov/odep/
When You're 18 You Are in Charge of Your Health	http://www.acphd.org/media/121171/transition_health_care.pdf



PARENT
connectedness

CONNECTIONS
to other
NON-PARENTAL
ADULTS



academic
ACHIEVEMENT



SCHOOL
SAFETY



PROTECTIVE
FACTORS

CLOSENESS
to **CARING**
FRIENDS



awareness
of and
ACCESS
to local
HEALTH
SERVICES



NEIGHBOURHOOD
SAFETY



overall
resilience

NURTURING & ATTACHMENT



FARMERS MARKETS

Oroville Saturday Market



Downtown Oroville: Montgomery Street and Myers Street
May to last week of October. 7:30 AM – 12:00 PM

CONCRETE SUPPORTS IN TIMES OF NEED



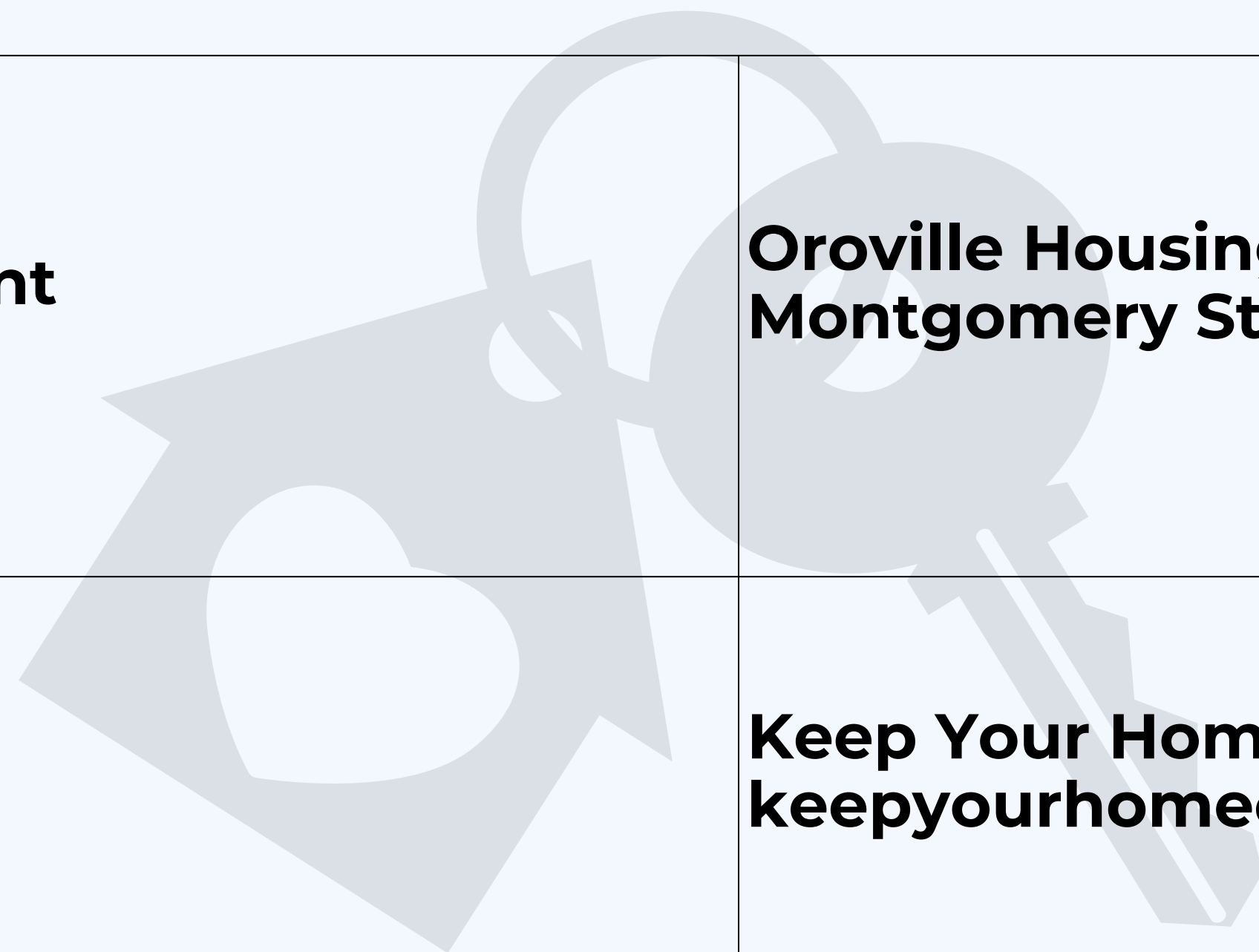
HOUSING

Oroville Housing Department

Oroville Housing Department (530) 538-2495 1735
Montgomery Street, Oroville, CA 95965

Keep Your Home California

Keep Your Home California (888) 954-5337
keepyourhomecalifornia.org (888) 954-KEEP



OROVILLE RESOURCES

CONCRETE SUPPORTS IN TIMES OF NEED



FAMILY RESOURCES

Butte County 211	Butte 211 Dial 211 www.helpcentral.org
National Parent Helpline	(855) 427-2736 www.nationalparenthelpline.org (855) 4 A PARENT
CalFresh	http://www.c4yourself.com/ (877) 410-8803 78 Table Mountain Blvd, Oroville, CA 95965
CalWORKs	http://www.c4yourself.com/ (877) 410-8803 78 Table Mountain Blvd, Oroville, CA 95965
California Low-Cost Auto Insurance	www.mylowcostauto.com (866) 602-8861
Facebook for Sale Groups	Butte County's Virtual Yard Sale: https://www.facebook.com/groups/105386366278218/
Boys and Girls Club	Oroville (530) 533-3067 2959 Lower Wyandotte Road, Oroville, CA 95965
Butte Community College	Main Campus (530) 895-2361 3536 Butte Campus Drive, Oroville, CA 95966
Butte County Department of Employment and Social Services (DESS)	DESS Oroville (530) 538-7301 78 Table Mountain Blvd, Oroville, CA 95965 <ul style="list-style-type: none"> • Adult Services (530) 538-7538 • Reporting Line (800) 664-9774 • In-Home Supportive Services (855) 398-8899 • Public Guardian (530) 538-7251
Butte County Library	Oroville Library (530) 538-7641 1820 Mitchell Avenue, Oroville, CA 95966
Freecycle Network	Oroville: https://groups.freecycle.org/group/OrovilleCA/

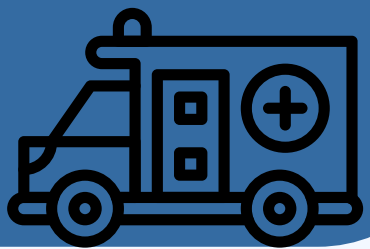
OROVILLE RESOURCES
CONCRETE SUPPORTS IN TIMES OF NEED



DISABILITY SERVICES

Ability First Sports Camp	(530) 588-0335 http://www.facebook.com/abilityfirstsports
Deaf and Disabled Telecommunications Program	Telecommunications Program (800) 806-1191 http://ddtp.cpuc.ca.gov/
ARC of Butte County	(530) 532-1272 2745 Oro Damn Blvd, Oroville, CA 95966
Butte Community College: Disabled Student Program and Services	Disabled Student Program & Services (530) 895-2455 3536 Butte Campus Drive, Oroville, CA 95965
Feather River Industries	Feather River Industries (530) 534-1112 1811 Kusel Road, Oroville, CA 95966
Handi-Riders of Northern California	Handi-Riders (530) 533-5333 1391 Clark Road, Oroville, CA 95965
State Department of Rehabilitation	Oroville (530) 538-6856 78 Table Mountain Blvd., Oroville, CA 95965

CONCRETE SUPPORTS IN TIMES OF NEED



EMERGENCY SERVICES

<p>Butte County Adult Protective Services</p>	<p>(800) 664-9774</p>
<p>Cherokee Restoration Fellowship</p>	<p>Office (530) 534-3663 2041 Fogg Avenue, Oroville, CA 95965</p>
<p>Children's Services Division</p>	<p>24-hour Abuse Hotline 1-800-400-0902 South County Office (530) 538-7617 78 Table Mountain Blvd., Oroville, CA 95965</p>
<p>Father's House Church Food Pantry</p>	<p>Food Pantry (530) 534-4140 2833 Fort Wayne Street, Oroville, CA 95966</p>
<p>Oroville Hope Center</p>	<p>Hope Center (530) 538-8398 1950 Kitrick Avenue, Suite A, Oroville, CA 95966</p>
<p>Oroville Rescue Mission</p>	<p>Administrative Office (530) 533-9120 2445 Oro Dam Blvd, Suite 2, Oroville, CA 95966 Men's Shelter (530) 534-9541 Women's Shelter (530) 533-0351 4250 Lincoln Blvd, Oroville, CA 95966</p>
<p>Salvation Army</p>	<p>Toll Free (800) 728-7825</p>

OROVILLE RESOURCES KNOWLEDGE OF PARENTING & CHILD DEVELOPMENT



HEALTH & WELLNESS

Covered California	Covered CA (800) 300-1506 www.coveredca.com
Enloe Medical Center	Hospital (530) 332-7300 1531 Esplanade, Chico, CA 95926
Butte County Public Health	Oroville Clinic (530) 538-7341 78 Table Mountain Blvd, Oroville, CA 95965 Tobacco Information (530) 538-7581 202 Mira Loma Drive, Oroville, CA 95965
Caring for Women	Caring for Women (530) 532-9362 2309 Lincoln Street, Oroville, CA 95965
Ampla Health	(530) 534-7500 2800 Lincoln Street, Oroville, CA 95966
Feather River Tribal Health	FRTH (530) 534-5394 2145 5th Avenue, Oroville, CA 95965
Medi-Cal	Oroville (530) 538-7301 78 Table Mountain Blvd, Oroville, CA 95965
Oroville Hospital	Hospital (530) 533-8500 2767 Olive Highway, Oroville, CA 95966
Social Security Administration	Oroville (866) 331-7130 115 Table Mountain Blvd, Oroville, CA 95966

**OROVILLE RESOURCES
SOCIAL & EMOTIONAL COMPETENCE**



TRANSITION RESOURCES

Disability Benefits 101

<https://ca.db101.org/>

Genetically Handicapped Persons Program (GHPP)

**GHPP (916) 327-0470
Toll Free (800) 639) 0597**

Got Transition

<http://www.gottransition.org/>

Office of Disability Employment Policy (ODEP)

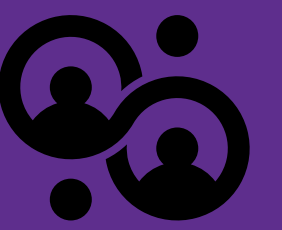
<http://www.dol.gov/odep/>

When You're 18 You Are in Charge of Your Health

http://www.acphd.org/media/121171/transition_health_care.pdf

OROVILLE RESOURCES

SOCIAL CONNECTIONS



LEGAL SERVICES

Butte County Self Help and Referral Program (SHARP)

**Oroville (530) 532-7015
One Court Street, Oroville, CA 95965**

Butte County Victim Witness

**Victim Witness (530) 538-7340
25 County Center Drive, Suite 218, Oroville, CA 95965**

Superior Court of California, County of Butte County

<http://www.buttecourt.ca.gov/>

- **Butte County Courthouse (530) 532-7002
One Court Street, Oroville, CA 95965**
- **Appeals (530) 532-7023**
- **Court Administration (530) 532-7013**
- **Court Compliance (530) 532-7014**
- **Criminal (530) 532-7011**
- **Jury (530) 532-7001**
- **Juvenile Delinquency (530) 532-7023**
- **Mediation (530) 532-7003**
- **Traffic (530) 532-7005**

OROVILLE RESOURCES SOCIAL CONNECTIONS



TRANSPORTATION SERVICES

American Cancer Society	Toll Free (800) 227-2345 <u>www.cancer.org</u>
American Kidney Fund	Toll Free (800) 638-8299 <u>www.kidneyfund.org</u>
Angel Flight West	Toll Free (888) 4-AN-ANGEL <u>www.angelflightwest.org</u> (888) 426-2643
Medi-Cal Managed Care	Anthem Blue Cross (877) 931-4755 California Health and Wellness (866) 842-0631
Shriners Hospital for Children	Bill Richards (530) 872-1343 Claudia (916) 453-2095

RESILIENCE



COUNSELING & MENTAL HEALTH SERVICES

<p>African American Family and Cultural Center</p>	<p>(530) 532-1205 3300 Spencer Avenue, Oroville, CA 95966</p>
<p>Butte County Department of Behavioral Health</p>	<p>Crisis Intervention Toll Free Line (800) 334-6622 Local Crisis Intervention Line: (530) 891-2810</p> <p>Oroville Adult Services: (530) 538-7705 18 County Center Drive, Oroville, CA 95965</p>
<p>Catalyst Domestic Violence Services</p>	<p>24 Hour Hotline (800) 895-8476 Oroville Drop-In Center (530) 532-6427 1931 Arlin Rhine Drive, Oroville, CA 95966</p>
<p>Feather River Tribal Health</p>	<p>Feather River Tribal Health (530) 534-5394 2145 5th Avenue, Oroville, CA 95965</p>
<p>Hmong Cultural Center of Butte County</p>	<p>Hmong Cultural Center (530) 534-7474 1940 Feather River Blvd, Suite H, Oroville, CA 95965</p>
<p>Northern Valley Catholic Social Services (NVCSS)</p>	<p>NVCSS Oroville (530) 538-8221 2185 Baldwin Avenue, Oroville, CA 95966</p>
<p>Northern Valley Talk Line</p>	<p>Northern Valley Talk Line (855) 582-5554</p>